

EQUIPMENT ANCHORAGE NOTES

1. ALL MECHANICAL AND ELECTRICAL EQUIPMENT SHALL BE BRACED OF ANCHORED TO RESIST A HORIZONTAL FORCE ACTING IN ANY DIRECTION USING THE FOLLOWING CRITERIA PER 2016 CBC, AND ASCE 07-10

$$F_p = \frac{400 S_{ps} W_p}{(R_p I_p)} (1 + S_z \frac{h}{L}) = 1.19 W_p$$

WHERE:

Fp = HORIZONTAL SEISMIC FORCE AT STRENGTH LOAD LEVEL 1.0E
 op = 2.5 FOR FLEXIBLE EQUIPMENT, INCLUDING EQUIP. ON VIBRATION ISOLATORS
 Sps = 1.58
 Ip = 1.5
 Rp = 6
 h = HEIGHT OF EQUIPMENT ATTACHMENT ABOVE GRADE
 Wp = WEIGHT OF EQUIPMENT

- Fp SHALL NOT BE LESS THAN .3Sps Ip Wp = 0.71 Wp
 Fp NEED NOT EXCEED 1.6Sps Ip Wp = 3.79 Wp
- ANCHORS MUST MEET REQUIREMENTS OF 2016 CBC SECTION 1616A.1.19.
- FOR LOAD COMBINATIONS, SEE 2016 CBC.
- ALL EQUIPMENT SHALL BE DESIGNED FOR A SIMULTANEOUS VERTICAL SEISMIC FORCE EQUAL TO + .20 S Wp = 0.32 Wp
- ANCHORAGE OF EQUIPMENT SHALL BE PER 2016 CBC AND ASCE 07-10, TABLE 13.6-1 AND SECTION 13.6.0S

GENERAL NOTES

- ALL ELECTRICAL WORK SHALL CONFORM TO 2016 CBC STATE ELECTRICAL CODES. CODES ENFORCED BY THE AUTHORITY HAVING JURISDICTION AND DSA REQUIREMENTS. ALL ELECTRICAL MATERIAL AND EQUIPMENT SHALL BE UL LISTED.
- MINIMUM WIRE SIZE FOR LINE VOLTAGE WIRING SHALL BE #12 AWG, 600 VOLT "THW" OR "THHN" INSULATION, COPPER CONDUCTORS. WIRING FOR SIGNAL AND FIRE ALARM SYSTEMS SHALL BE AS NOTED ON THE DRAWINGS.
- ALL CONDUIT SIZES SHALL CONFORM TO THE NATIONAL ELECTRICAL CODE FOR CONDUIT FILL.
- THE SEISMIC ANCHORAGE OF ELECTRICAL EQUIPMENT SHALL CONFORM TO CCR, TITLE 24, 2016 CBC SECTION 1616A, AND ASCE 7-10 CHAPTER 13
- ALL CONDUIT, WIRE, DEVICES, AND BOXES ARE NEW UNLESS NOTED OTHERWISE.
- THE CONTRACTOR SHALL VERIFY ALL CONDITIONS AT THE JOB SITE PRIOR TO SUBMITTING BID.
- CONTRACTOR SHALL FURNISH AND INSTALL COMPLETE SYSTEMS AT THE SITE. THE SYSTEMS SHALL INCLUDE: ALL EQUIPMENT, CONDUIT CABLE, WIRE AND ALL NECESSARY ITEMS FOR THE SYSTEM TO BE OPERABLE.
- THE CONTRACTOR SHALL OBTAIN AND PAY FOR ALL PERMITS AND INSPECTIONS WHICH ARE REQUIRED FOR THE ELECTRICAL WORK BY LEGALLY CONSTITUTED AUTHORITIES, AND SHALL DELIVER ALL CERTIFICATES TO THE DISTRICTS FACILITIES BRANCH BEFORE THE WORK IS STARTED.
- ALL RUNS OF CONDUIT ONLY SHALL HAVE AN IDEAL CAT. #31-343 "POWER-FISH" PULL LINE INSTALLED.
- THE DRAWINGS INDICATE THE ELECTRICAL WORK WHICH IS TO BE IN PLACE WHEN THE WORK IS COMPLETE.
- NO CABLE SHALL BE INSTALLED PRIOR TO THE INSPECTION AND ACCEPTANCE OF A COMPLETED CONDUIT SYSTEM.
- EXISTING CIRCUITS, CONDUIT RUNS AND OUTLET LOCATION HAVE BEEN DEVELOPED FROM THE BEST INFORMATION AVAILABLE TO THE DISTRICT AT THE TIME THE DRAWINGS WERE PREPARED. THE DISTRICT PROVIDES THIS ONLY AS A GENERAL GUIDELINE FOR THE CONVENIENCE OF BUILDERS/CONTRACTORS AND DOES NOT GUARANTEE OR WARRANT IN ANY WAY EXPRESSLY OR IMPLIED THE ACCURACY OF THESE REPRESENTATIONS. NOTHING IN THE DISCLAIMER AFFECTS THE CONTRACTORS RESPONSIBILITY TO PROVIDE ACCURATE "AS-BUILT" DRAWINGS AFTER THE COMPLETION OF THE CONTRACT.
- AT NO TIME DURING CONSTRUCTION AND INSTALLATION MODIFICATION OF THE FIRE ALARM SYSTEM SHALL THE SCHOOL BE WITHOUT AN OPERATIONAL FIRE ALARM SYSTEM WHEN CHILDREN ARE ON CAMPUS. CHANGE OVERS MUST BE DONE AFTER SCHOOL OR ON THE WEEKENDS. THE CONTRACTOR SHALL NOTIFY THE SCHOOL SITE PERSONAL AND THE MAINTENANCE OFFICE 48 HOURS PRIOR TO ANY DISCONNECTION OR CHANGE OVER OF THE FIRE ALARM SYSTEM, OR A FIRE WATCH WILL BE REQUIRED. CBC CHAPTER 34 AND CHAPTER 14 CFC.
- THE TERM "PULL" USED ON THE DRAWINGS SHALL BE CONSIDERED TO MEAN "FURNISH, INSTALL AND CONNECT".
- ALL EQUIPMENT SHALL BE LISTED BY AN APPROVED TESTING AGENCY PER SPECIFICATIONS. IN ADDITION, ALL FIRE ALARM AND DETECTION EQUIPMENT SHALL BE LISTED BY THE CALIFORNIA STATE FIRE MARSHAL (CSFM).
- ALL NEW CONDUITS INSTALLED UNDER THIS SECTION OF WORK SHALL BE 3/4 INCH MINIMUM SIZE.
- IT SHALL BE THE CONTRACTORS RESPONSIBILITY TO PATCH AND REPAIR ALL DAMAGE TO EXISTING FINISHES. THE AREAS OF WORK SHALL BE REPAIRED TO THE FINISH EXISTING PRIOR TO THE COMMENCEMENT OF WORK.
- CONTRACTOR SHALL INSTALL NEW BLANK PLATES ON ALL EXISTING FLUSH OUTLETS THAT ARE ABANDONED IN PLACE. CONTRACTOR SHALL VERIFY LOCATION OF ALL ABANDONED OUTLETS AND SHALL INSTALL NEW PLATES ON ALL - EVEN THOSE NOT INDICATED OR NOTED SPECIFICALLY ON THE DRAWINGS.
- ALL NEW OUTLETS (FOR RECEPTACLES, SWITCHES, J-BOXES, ETC.) INSTALLED IN EXISTING WALLS SHALL BE "CUT-IN" TYPE BOXES WITH FLEXIBLE CONDUIT "FISHED" INTO WALL CAVITY FROM CEILING SPACE ABOVE. ON EXISTING MASONRY WALLS (OR OTHER INACCESSIBLE TYPE WALLS) NEW OUTLETS SHALL BE SURFACE RACEWAY TYPE WITH EXPOSED SURFACE RACEWAY (WIREMOLD) OF APPROPRIATE SIZE. OBTAIN ARCHITECTS APPROVAL FOR ALL SURFACE RACEWAY LOCATIONS.
- PLUG ALL KNOCK-OUTS WHERE CONDUITS ARE REMOVED FROM EXISTING BOXES, PANELS, SWITCHBOARDS, ENCLOSURES, ETC.
- PROVIDE CONCRETE MOUNTING PADS FOR ALL NEW FLOOR MOUNTED ELECTRICAL EQUIPMENT. REFER TO SPECIFICATIONS.
- WHERE HVAC AND PLUMBING EQUIPMENT IS SHOWN ON ELECTRICAL DRAWINGS, IT IS FOR REFERENCE ONLY. SEE MECHANICAL DRAWINGS FOR EXACT SIZE, LOCATION, CONNECTIONS, ETC. OF ALL EQUIPMENT. ALL WORK DESIGNATED AS "ELECTRICAL" ON MECHANICAL/ PLUMBING DRAWINGS SHALL BE DONE AS IF SHOWN ON THESE PLANS. VERIFY ALL LOCATIONS OF MECHANICAL EQUIPMENT WITH APPROPRIATE CONTRACTORS.
- THE CONTRACTOR IS RESPONSIBLE FOR SEALING ALL FIRE RATED PENETRATIONS WHETHER INDICATED OR NOT.
- IF THE CONTRACTOR BELIEVES THAT THERE ARE CONFLICTS WITHIN THESE ELECTRICAL DRAWINGS OR BETWEEN THE ELECTRICAL DRAWINGS AND THE SPECIFICATIONS, OR BETWEEN THE ELECTRICAL DRAWINGS AND ANY MECHANICAL, ARCHITECTURAL, PLUMBING OR STRUCTURAL DRAWING, BID THE MORE EXPENSIVE OR ELABORATE PROCESS OR PROCEDURE SHOWN AND CALL THE DISCREPANCY TO THE ARCHITECT'S ATTENTION. SHOULD THE DISTRICT, IN ITS DISCRETION, CHOOSE TO IMPLEMENT THE CHEAPER OR SIMPLER PROCEDURE AFTER BID OPENING, A CREDIT CHANGE ORDER WILL BE ISSUED TO THE CONTRACTOR.
- INSTALL ALL CONDUIT BUSHINGS PRIOR TO INSTALLATION OF ANY CONDUCTORS, SEE NOTE #12.
- THE CONTRACTOR SHALL CAREFULLY REVIEW THE SPECIFICATIONS AS THEY PERTAIN TO RIGID CONDUIT. THE SPECIFICATION REQUIREMENTS ARE VERY STRINGENT AND SUBSTANTIALLY EXCEED MINIMUM CODE REQUIREMENTS. NO DEVIATIONS WILL BE ALLOWED WHERE RIGID CONDUIT IS CALLED FOR.
- UPON COMPLETION OF THE ELECTRICAL INSTALLATION, PATCH AND PAINT AS REQUIRED TO RESTORE WALLS AND SURFACES TO NEW CONDITION.
- ALL EXPOSED CONDUIT, PULLBOXES, OUTLET BOXES, ETC. SHALL BE PAINTED TO MATCH SURROUNDING SURFACE. COORDINATE WITH ARCHITECT. REFER TO SPECIFICATIONS.
- ALL DEMOLITION SHALL COMPLY WITH CH. 34 CBC AND CHAPTER 14 CFC.

MEP COMPONENT ANCHORAGE NOTES

ALL MECHANICAL, PLUMBING, AND ELECTRICAL COMPONENTS SHALL BE ANCHORED AND INSTALLED PER THE DETAILS ON THE DSA APPROVED CONSTRUCTION DOCUMENTS. WHERE NO DETAIL IS INDICATED, THE FOLLOWING COMPONENTS SHALL BE ANCHORED OR BRACED TO MEET THE FORCE AND DISPLACEMENT REQUIREMENTS PRESCRIBED IN THE 2016 CBC, SECTIONS 1616A.1.18 THROUGH 1616A.1.26 AND ASCE 7-10 CHAPTER 13, 26 AND 30.

- ALL PERMANENT EQUIPMENT AND COMPONENTS
- TEMPORARY OR MOVABLE EQUIPMENT THAT IS PERMANENTLY ATTACHED (E.G. HARD WIRED) TO THE BUILDING UTILITY SERVICES SUCH AS ELECTRICITY, GAS OR WATER
- MOVABLE EQUIPMENT WHICH IS STATIONED IN ONE PLACE FOR MORE THAN 8 HOURS AND HEAVIER THAN 400 LBS. ARE REQUIRED TO BE ANCHORED WITH TEMPORARY ATTACHMENTS.

THE ATTACHMENT OF THE FOLLOWING MECHANICAL AND ELECTRICAL COMPONENTS SHALL BE POSITIVELY ATTACHED TO THE STRUCTURE, BUT NEED NOT BE DETAILED ON THE PLANS. THE PROJECT INSPECTOR WILL VERIFY THAT THESE ITEMS HAVE BEEN POSITIVELY ATTACHED. THESE COMPONENTS SHALL HAVE FLEXIBLE CONNECTIONS PROVIDED BETWEEN THE COMPONENT AND ASSOCIATED DUCTWORK, PIPING, AND CONDUIT.

- COMPONENTS WEIGHING LESS THAN 400 LBS. AND HAVE A CENTER OF MASS LOCATED 4 FEET OR LESS ABOVE THE ADJACENT FLOOR OR ROOF LEVEL THAT DIRECTLY SUPPORT THE COMPONENT.
- COMPONENTS WEIGHING LESS THAN 20 LBS. OR IN THE CASE OF DISTRIBUTED SYSTEMS, LESS THAN 5 LBS PER FOOT, WHICH ARE SUSPENDED FROM A ROOF OR FLOOR OR HUNG FROM A WALL.

FOR THESE ELEMENTS THAT DO NOT REQUIRE DETAILS ON THE APPROVED DRAWINGS, THE INSTALLATION SHALL BE SUBJECT TO THE APPROVAL OF THE DESIGN PROFESSIONAL IN GENERAL RESPONSIBLE CHARGE OR STRUCTURAL ENGINEER DELEGATED RESPONSIBILITY AND THE DSA DISTRICT STRUCTURAL ENGINEER. THE PROJECT INSPECTOR WILL VERIFY THAT ALL COMPONENTS AND EQUIPMENT HAVE BEEN ANCHORED IN ACCORDANCE WITH ABOVE REQUIREMENTS.

PIPING, DUCTWORK, AND ELECTRICAL DISTRIBUTION SYSTEM BRACING NOTES

PIPING, DUCTWORK, AND ELECTRICAL DISTRIBUTION SYSTEMS SHALL BE BRACED TO COMPLY WITH THE FORCES AND DISPLACEMENTS IN ASCE 7-10 SECTION 13.3 AS DEFINED IN ASCE 7-10 SECTION 13.5.5.6, 13.5.7, 13.6.8 AND 2016 CBC, SECTIONS 1616A.1.23, 1616A.1.24, 1616A.1.25 AND 1616A.1.26.

THE METHOD OF SHOWING BRACING AND ATTACHMENTS TO THE STRUCTURE FOR THE IDENTIFIED DISTRIBUTION SYSTEM ARE AS NOTED BELOW. WHEN BRACING AND ATTACHMENTS ARE BASED ON A PREAPPROVED INSTALLATION GUIDE (E.G. SMACNA OR OSHDP OPM), COPIES OF THE BRACING SYSTEM INSTALLATION GUIDE OR MANUAL SHALL BE AVAILABLE ON THE JOBSITE PRIOR TO THE START OF AND DURING THE HANGING AND BRACING OF THE DISTRIBUTION SYSTEMS. THE STRUCTURAL ENGINEER OF RECORD SHALL VERIFY THE ADEQUACY OF THE STRUCTURE TO SUPPORT THE HANGER AND BRACE LOADS.

- MP□M□□PP□EB - OPTION 1: DETAILED ON THE APPROVED DRAWINGS WITH PROJECT SPECIFIC NOTES AND DETAILS.
- MP□M□□PP□ED - OPTION 2: SHALL COMPLY WITH THE APPLICABLE OSHDP PRE-APPROVAL (OMP #) #_____
- MP□M□□PP□ - OPTION 3: SHALL COMPLY WITH THE SMACNA SEISMIC RESTRAINT MANUAL, OSHDP EDITION (2009), INCLUDING ANY ADDENDA. FASTNERS AND OTHER ATTACHMENTS NOT SPECIFICALLY IDENTIFIED IN THE SMACNA SEISMIC RESTRAINT MANUAL, OSHDP EDITION, ARE DETAILED ON THE APPROVED DRAWINGS WITH PROJECT SPECIFIC NOTED AND DETAILS, THE DETAILS SHALL ACCOUNT FOR THE APPLICABLE SEISMIC HAZARD LEVEL_____ AND THE CONNECTION LEVEL_____ FOR THE PROJECT AND CONDITIONS.

LIGHTING FIXTURE SCHEDULE

FIXTURE TYPE	MANUFACTURER AND CATALOG NUMBER	LAMPS		FIXTURE		MOUNTING	DESCRIPTION
		TYPE	WATTS	COLOR TEMP.	INPUT VOLTS		
A	LITHONIA LIGHTING CAT. # GRD-LSL-8-MSL4-80CRI-35K-10100LMF-20/80-MINI-2T-120-SCT-C210	LED	32	3500° K	120	32	PENDANT MOUNTED LED FIXTURE WITH PAINTED STEEL HOUSING, ACRYLIC LENS AND INTEGRAL DRIVER.
B	LITHONIA LIGHTING CAT. # STL4-40L-EZ1-LP835	LED	34.9	3500° K	120	34.9	SURFACE MOUNTED LED DOWNLIGHT FIXTURE WITH WRAP AROUND LENS.
C	LITHONIA LIGHTING CAT. # LIL-LED-40K-MVOLT-PE-EL-WH	LED	8.4	4000° K	120	8.4	SURFACE MOUNTED LED FIXTURE WITH ALUMINUM HOUSING WITH POLYCARBONATE LENS. FIXTURE SHALL BE COMPLETE WITH INTEGRAL PHOTOCELL & BATTERY PACK.

7/31/2018 1:34:03 PM C:\Users\Jonathan\Documents\POINT DUME TEMPORARY HOUSING_dsk25BKQT.rvt



928 Natoma Street, Suite 200, San Francisco, CA 94103
 415.839.8418 / Fax 415.539.7894
 1539 Sawille Blvd, Suite 14, Los Angeles, CA 90025
 310.254.2283



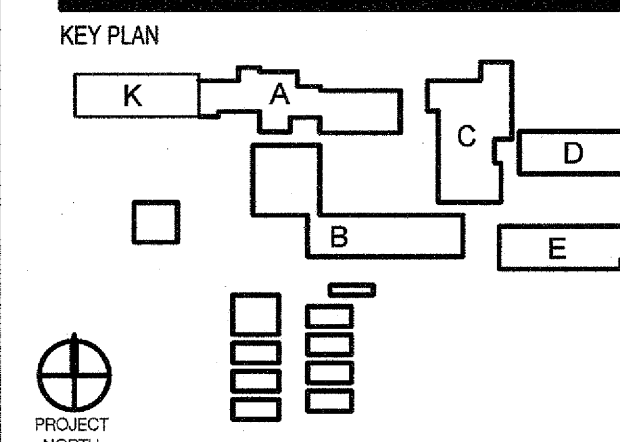
CONSULTANT
TURPIN & RATTAN
 ENGINEERS, INC.
 CONSULTING ENGINEERS
 3441 HONDOLILLU AVENUE, SUITE 200
 MONTEBELLO, CA 91020-1823
 818 / 349-7148 FAX 818 / 349-7149

PROJECT NAME
POINT DUME E.S. TEMPORARY HOUSING PROJECT

FACILITY INFO
 POINT DUME ELEMENTARY SCHOOL
 995 Fremont Dr, Malibu, CA 90265

AGENCY STAMP

FILE NUMBER: 18-08
 IDENTIFICATION STAMP
 DIVISION OF THE STATE ARCHITECT
 03-119298
 ASG: _____ PLS: _____ SSS: _____
 DATE: DEC 2, 2018



PROJECT ISSUE DATE: 2018/12/20

DATE	NO.	REVISIONS
2018/12/20	1	DSA BACKCHECK

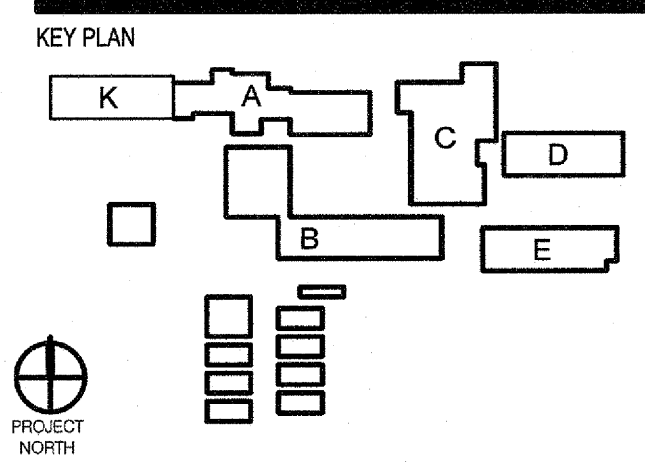
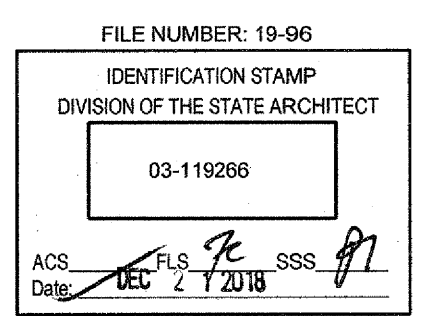
SHEET TITLE DSK JOB NO. 170128

GENERAL ELECTRICAL NOTES

SHEET NUMBER

E-002

DRAFTER: RK PM: JK REVIEWER: KK



PROJECT ISSUE DATE: 2018/12/20

DATE	NO.	REVISIONS
2018/12/20	001	DSA BACKCHECK

ACTION	DEVICES		
	MANUAL PULL STATION	SMOKE/HEAT DETECTORS	AC POWER FAILURE
SOUND ALARM AT FACP	YES	YES	NO
ACTIVATE RELAY FOR OFF-SITE MONITORING	YES	YES	YES
SOUND TROUBLE BUZZER AT FACP	ON WIRING FAULT	ON WIRING FAULT	YES
ANNUNCIATE AT FACP	YES	YES	YES
ACTIVE SPEAKERS AND VISUALS	YES	YES	NO
HVAC SHUTDOWN	YES	YES	NO

SCHOOL IS NON-SPRINKLERED

SEQUENCE OF OPERATION MATRIX
 NO SCALE

DESIG.	DESCRIPTION	MANUFACTURER	CSFM LISTING
A	AUDIO CIRCUIT, 1#18 TSP	WEST PENN #0975	7161-0858-0101
V	VISUAL CIRCUIT, 2#12 THHN	VARIOUS	N/A
Z	ADDRESSABLE LOOP, 1 PR. #18 TSP	WEST PENN #0975	7161-0858-0101
P	POWER 24VDC 2#14 THHN	VARIOUS	N/A

* ALL FIRE ALARM WIRING SHALL BE ROUTED IN 3/4" C EMT (MINIMUM) BUT NOT LESS THAN INDICATED ON FLOOR PLANS
 TP = TWISTED PAIR
 TSP = TWISTED SHIELDED PAIR

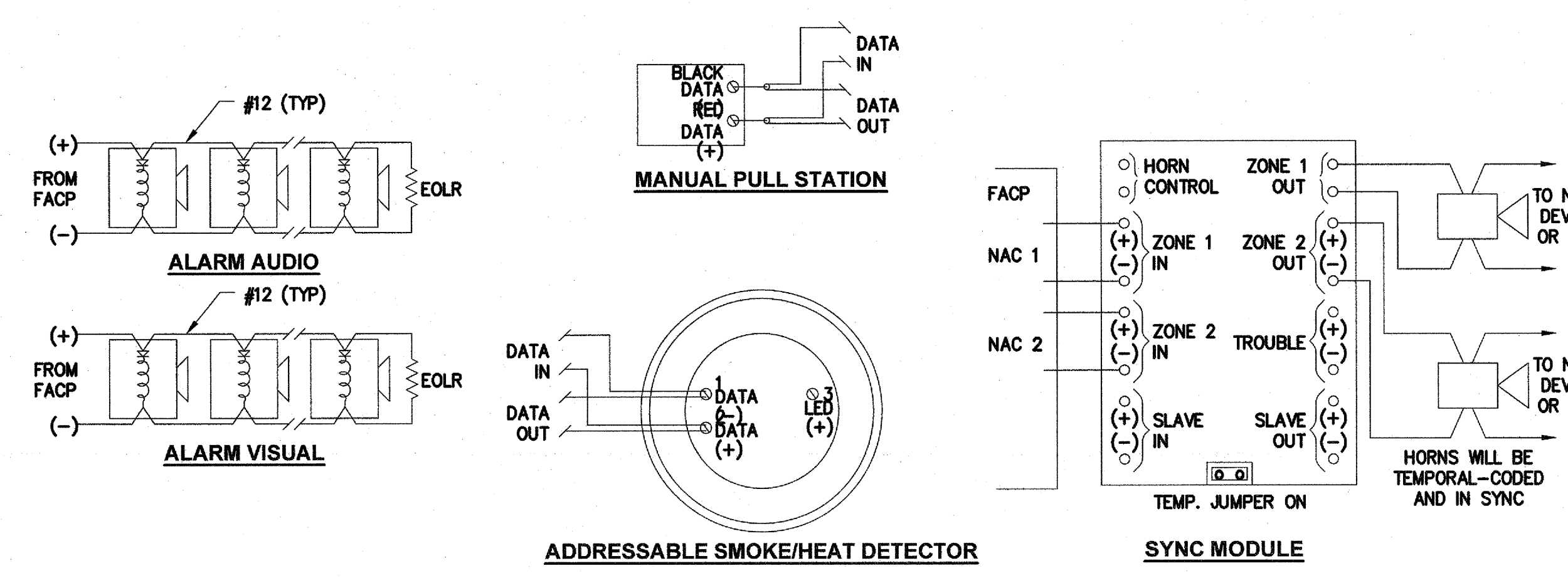
ITEM DESCRIPTION	SYMBOL	MOUNTING	MODEL#	CSFM LISTING NO.
FIRE ALARM CONTROL PANEL "FACP" - 4100UJ	[Symbol]	+48"	4100-9311 4100 ES	7165-0026:0251
FIRE ALARM VOICE COMMAND 4100ES	[Symbol]	+48"	4100 ES	7165-0026:0251
FIRE ALARM REMOTE CONTROL ANNUAL PANEL W/VOICE EVAC - 4009	[Symbol]	+48"	4100-9610 W/ 4100-1292	7165-0026:0251
FIRE ALARM NAC EXTENDER - 4009	[Symbol]	+48"	4009-9201	7300-0026:0214
ADDRESSABLE NAC CONTROLLER	[Symbol]	+48"		7300-0026:0214
SPEAKER WITH WALL WEATHERPROOF BACK BOX	[Symbol]	+90"	SPNK (SYSTEM SENSOR)	7320-1653:0201
MULTI-CANDELLA SPEAKER/STROBE DEVICE SEPARATELY CIRCUITED ON FLUSH WALL MOUNTED OUTLET BOXES (15, 30, 75 OR 110 CANDELLA AS INDICATED)	[Symbol]	+80"	4906-9253	7320-0026:0322
VISUAL DEVICE ON OUTLET BOX (NUMBER INDICATES 15, 75, 30 OR 110 CANDELLA RATING)	[Symbol]	+80"	49V0-WHF	7135-0026:0373
MULTI-CANDELLA VISUAL DEVICE ON FLUSH CEILING MOUNTED OUTLET BOX (NUMBER INDICATES 75 CANDELLA RATING)	[Symbol]	CEILING	4906-9204	7125-0026:0235
MULTI-CANDELLA SPEAKER/STROBE DEVICE SEPARATELY CIRCUITED ON FLUSH CEILING MOUNTED OUTLET BOX (NUMBER INDICATES 75 CANDELLA RATING)	[Symbol]	CEILING	4906-9254	7320-0026:0322
TRUE ALARM ANALOG PHOTOELECTRIC SMOKE SENSOR WITH BASE	[Symbol]	CEILING	4098-9714 4098-9792 (BASE)	7272-0026:0218 7300-0026:0217
FIXED 135°F HEAT DETECTOR ON FLUSH CEILING MOUNTED OUTLET BOX	[Symbol]	CEILING	4098-9733 4098-9792 (BASE)	7272-0026:0216 7300-0026:0217
FIXED 160°F HEAT DETECTOR	[Symbol]	ABOVE CEILING	4098-9734 4098-9792 (BASE)	7272-0026:0218 7300-0026:0217
END OF LINE RESISTOR DEVICE	[Symbol]			
MANUAL PULL STATION (INDOOR)	[Symbol]	+48"	4099-9021	7150-0026:0224
MONITOR MODULE	[Symbol]	JUNCTION BOX	4090-9001	7300-0026:0223
CONTROL MODULE	[Symbol]	JUNCTION BOX	4090-9002	7150-0026:0223
WEATHERPROOF VISUAL DEVICE ON WP OUTLET BOX (NUMBER INDICATES 15, 75, 30 OR 110 CANDELLA RATING)	[Symbol]	+80"	49V0-WRFO-BA 49WDBB-AVQWVW (BACK BOX)	7125-0026:0371
WEATHERPROOF SPEAKER/STROBE ON WP OUTLET BOX (NUMBER INDICATES 15, 75, 30 OR 110 CANDELLA RATING)	[Symbol]	+80"	49AV-WRFO-BA 49WDBB-AVQWVW (BACK BOX)	7125-0026:0371
BEAM DETECTOR EMITTER	[Symbol]	WALL	4098-9019	7260-0026:0377
BEAM DETECTOR IMAGER	[Symbol]			
LINEAR HEAT DETECTOR	[Symbol]	CEILING	PROTECTO-WRE HPHSC-190-EPR	7270-0854:0101

FIRE ALARM EQUIPMENT SCHEDULE
 NO SCALE

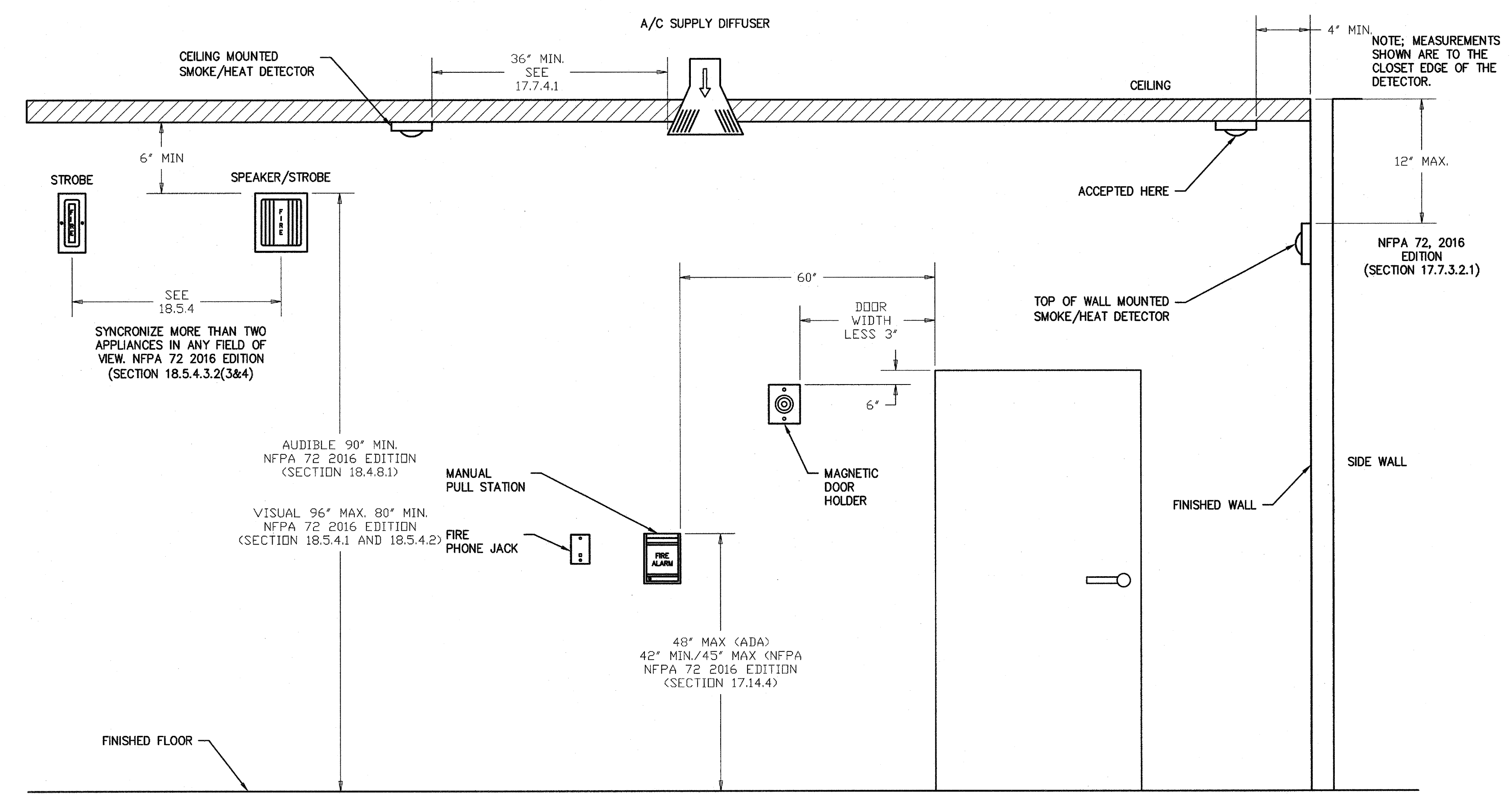
FIRE ALARM SYSTEM DESCRIPTION
 THE FIRE ALARM SYSTEM IS A FULLY AUTOMATIC SYSTEM. THE SYSTEM IS SUPERVISED BY AN OFF-SITE UL LISTED CENTRAL MONITORING STATION, PER NFPA 72. THERE IS ONE MAIN FIRE ALARM CONTROL PANEL AT LOWER BUILDING LEVEL. ANY INITIATING DEVICE ACTIVATED WILL ACTIVATE THE NOTIFICATION DEVICES. FOR TESTING PURPOSES AND FIRE DRILLS, A MANUAL PULL STATION WILL BE LOCATED IN THE ADMINISTRATION AREA AT THE MAIN ENTRY DESK.

A VOICE EVACUATION FEATURE HAS BEEN PROVIDED TO ALL AREAS OF THE CAMPUS AS WELL AS VISUAL DEVICES WHERE REQUIRED BY CODE.

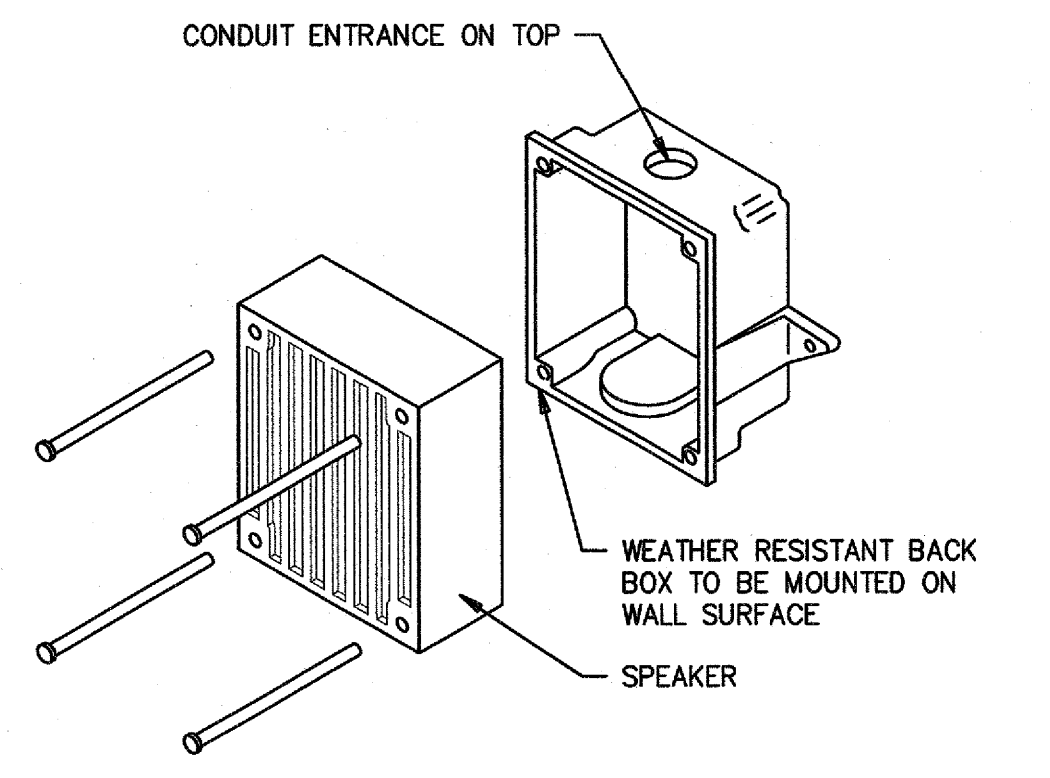
- FIRE ALARM SYSTEM NOTES
- THE FIRE ALARM SYSTEM SHOWN ON THESE DRAWINGS SHALL BE USED FOR CONSTRUCTION.
 - APPLICABLE CODE FOR FIRE ALARM:
 2016 CALIFORNIA BUILDING CODE, TITLE 24 PART 2
 2016 CALIFORNIA ELECTRICAL CODE, TITLE 24 PART 3
 2016 NFPA 72 WITH CSFM AMENDMENTS
 2016 CALIFORNIA FIRE CODE, TITLE 24 PART 9.
 - AUDIBLE DEVICES SHALL BE SIMILAR TO WHAT IS EXISTING ON CAMPUS. AUDIBILITY SHALL BE A MINIMUM OF 15 DB ABOVE AMBIENT NOISE, BUT NOT LESS THAN 75 DB AT 10'-0"
 - THESE DRAWINGS SHALL SERVE AS SHOP DRAWINGS OF THE FIRE ALARM SYSTEM AND HAVE BEEN SUBMITTED TO THE DSA-ORS FOR REVIEW AND APPROVAL.
 - THE LOCATION OF AUTOMATIC DETECTORS, MANUAL STATIONS AND OTHER FIRE ALARM EQUIPMENT AND DEVICES, AS SHOWN ON PLANS, ARE FOR CONSTRUCTION.
 - THE FIRE ALARM SYSTEM SHALL CONFORM TO ARTICLE 780 OF CALIFORNIA ELECTRICAL CODE. UPON COMPLETION OF THE INSTALLATION OF THE FIRE ALARM SYSTEM, A SATISFACTORY TEST OF THE ENTIRE SYSTEM SHALL BE MADE IN THE PRESENCE OF THE FIRE AUTHORITY HAVING JURISDICTION.
 - THE FOLLOWING INFORMATION IS INCLUDED IN THESE PLANS:
 a. IDENTIFICATION OF TYPE OF WIRING USED
 b. FLOOR PLAN SHOWING NEW FIRE ALARM DEVICES.
 c. RISER DIAGRAM AND POINT TO POINT DIAGRAM
 d. CSFM LISTING SHEET SHOWING EXP. DATE FOR ALL COMPONENTS
 e. MFR'S SPEC SHEET ON ALL FIRE ALARM EQUIPMENT
 f. BATTERY AND VOLTAGE DROP CALCULATIONS FOR EACH PANEL WITH A BATTERY
 g. SYMBOLS OF ALL FIRE ALARM DEVICES INSTALLED
 h. ELEVATION DETAIL OF MANUAL STATION, STROBES, SPEAKER/STROBES, AND SPEAKERS
 - SYSTEM OPERATION MATRIX: EFFECT OF THE OPERATION OF EACH FIRE ALARM DEVICE IS SHOWN ON THESE PLANS.
 - FLASHING VISUAL WARNING DEVICES SHALL HAVE A FREQUENCY OF NOT MORE THAN 60 FLASHES PER MINUTE.
 - STROBE SIGNALING DEVICES FOR THE HEARING IMPAIRED SHALL BE STATE FIRE MARSHAL APPROVED AND LISTED.



TYPICAL WIRING DIAGRAMS
 NO SCALE



FIRE ALARM DEVICE ELEVATIONS
 NO SCALE

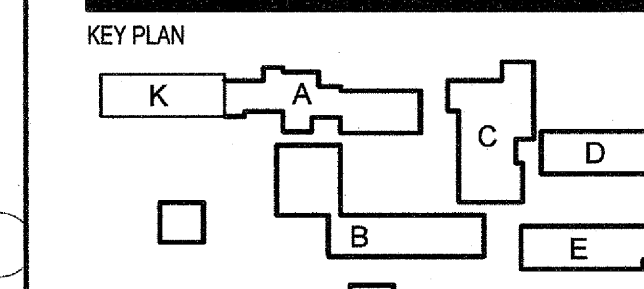
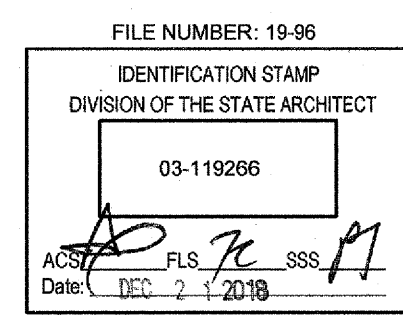


EXTERIOR SPEAKER DETAILS
 NO SCALE



CONSULTANT
18166.MDD
TURPIN & RATTAN
 ENGINEERS, INC.
 CONSULTING ENGINEERS
 2441 HONOLULU AVENUE, SUITE 200
 HUNTINGTON BEACH, CA 92648-1829
 818.754.8700 / FAX 818.754.1467

PROJECT NAME
POINT DUME E.S.
TEMPORARY HOUSING
PROJECT
 FACILITY INFO
 POINT DUME ELEMENTARY SCHOOL
 6955 Farnhill Dr., Malibu, CA 90265
 AGENCY STAMP



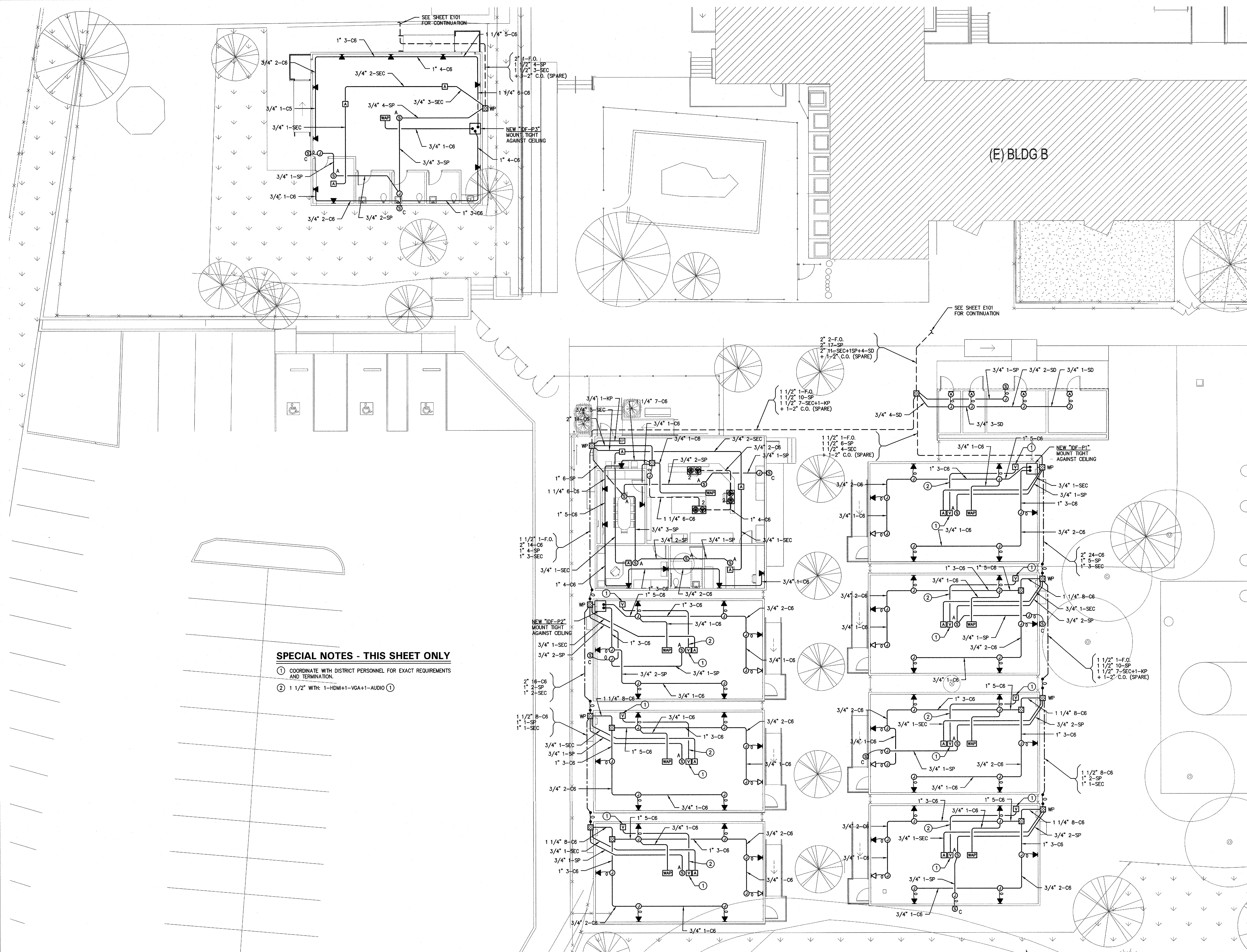
PROJECT ISSUE DATE: 2018/12/20

DATE	NO.	REVISIONS
2018/12/20	1	DSA BACKCHECK

SHEET TITLE
PARTIAL SITE PLAN - SIGNAL

SHEET NUMBER
E-202

dsk architects Copyright ©
 Printed on 7/31/2018 1:34:03 PM C:\Users\Jonathan\Documents\POINT DUME TEMPORARY HOUSING_dsk25BKQT.rvt



SPECIAL NOTES - THIS SHEET ONLY

- ① COORDINATE WITH DISTRICT PERSONNEL FOR EXACT REQUIREMENTS AND TERMINATION.
- ② 1 1/2" WITH: 1-HDMI+1-VGA+1-AUDIO ①

PARTIAL SITE PLAN - ELECTRICAL
 SCALE: 1/8"=1'-0"

